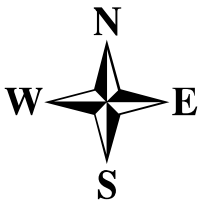
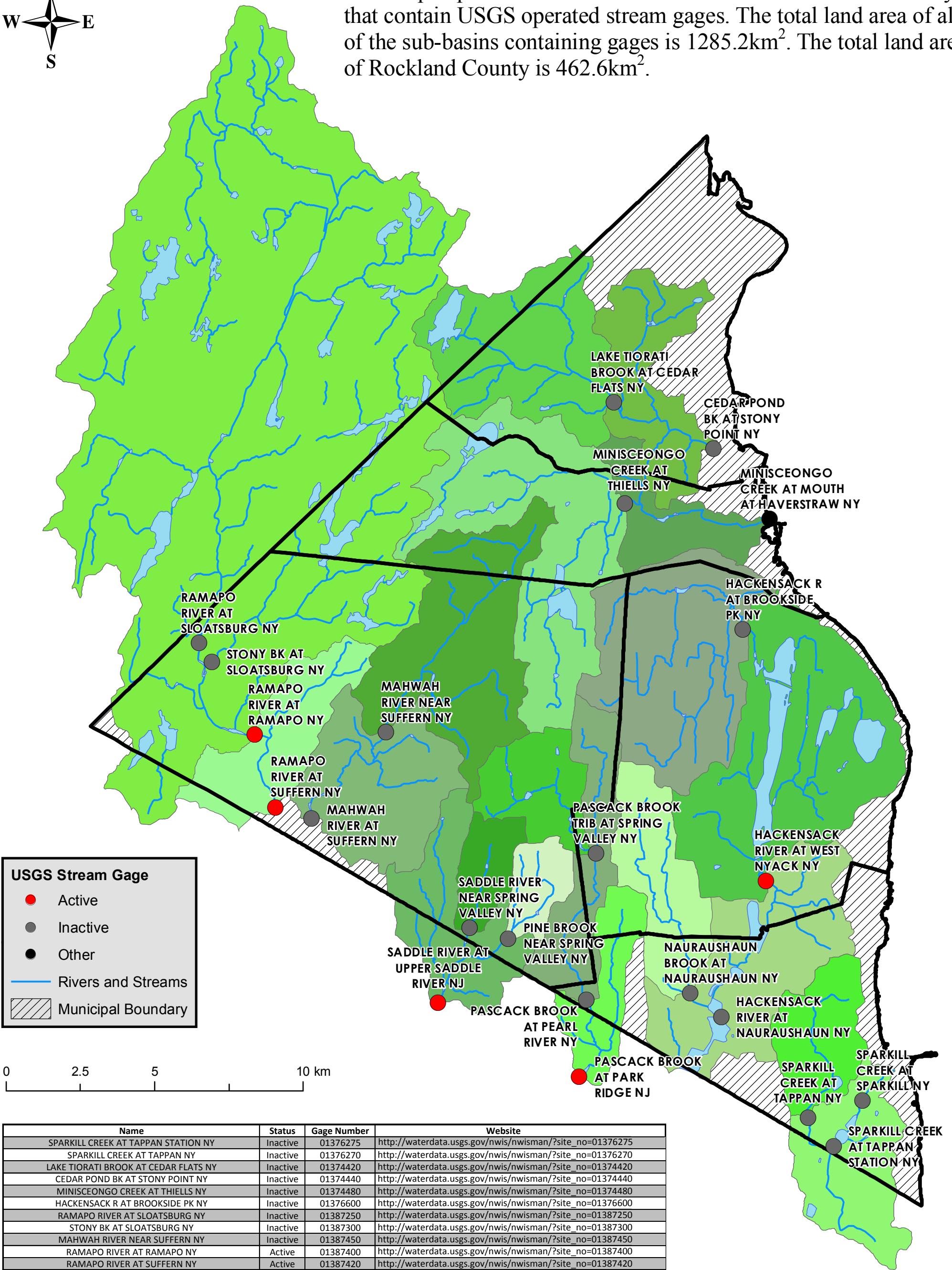


Rockland County Sub-Basins with USGS Stream Gages

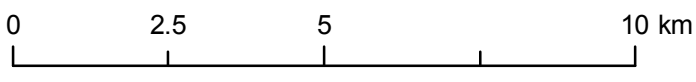


This map depicts those sub-basins in and around Rockland County that contain USGS operated stream gages. The total land area of all of the sub-basins containing gages is 1285.2km². The total land area of Rockland County is 462.6km².



USGS Stream Gage

- Active
- Inactive
- Other
- Rivers and Streams
- Municipal Boundary



| Name | Status | Gage Number | Website |
|---|----------|-------------|---|
| SPARKILL CREEK AT TAPPAN STATION NY | Inactive | 01376275 | http://waterdata.usgs.gov/nwis/nwisman/?site_no=01376275 |
| SPARKILL CREEK AT TAPPAN NY | Inactive | 01376270 | http://waterdata.usgs.gov/nwis/nwisman/?site_no=01376270 |
| LAKE TIORATI BROOK AT CEDAR FLATS NY | Inactive | 01374420 | http://waterdata.usgs.gov/nwis/nwisman/?site_no=01374420 |
| CEDAR POND BK AT STONY POINT NY | Inactive | 01374440 | http://waterdata.usgs.gov/nwis/nwisman/?site_no=01374440 |
| MINISCEONGO CREEK AT THIELLS NY | Inactive | 01374480 | http://waterdata.usgs.gov/nwis/nwisman/?site_no=01374480 |
| HACKENSACK R AT BROOKSIDE PK NY | Inactive | 01376600 | http://waterdata.usgs.gov/nwis/nwisman/?site_no=01376600 |
| RAMAPO RIVER AT SLOATSBURG NY | Inactive | 01387250 | http://waterdata.usgs.gov/nwis/nwisman/?site_no=01387250 |
| STONY BK AT SLOATSBURG NY | Inactive | 01387300 | http://waterdata.usgs.gov/nwis/nwisman/?site_no=01387300 |
| MAHWAH RIVER NEAR SUFFERN NY | Inactive | 01387450 | http://waterdata.usgs.gov/nwis/nwisman/?site_no=01387450 |
| RAMAPO RIVER AT RAMAPO NY | Active | 01387400 | http://waterdata.usgs.gov/nwis/nwisman/?site_no=01387400 |
| RAMAPO RIVER AT SUFFERN NY | Active | 01387420 | http://waterdata.usgs.gov/nwis/nwisman/?site_no=01387420 |
| MAHWAH RIVER AT SUFFERN NY | Inactive | 01387480 | http://waterdata.usgs.gov/nwis/nwisman/?site_no=01387480 |
| PASCACK BROOK TRIB AT SPRING VALLEY NY | Inactive | 01377200 | http://waterdata.usgs.gov/nwis/nwisman/?site_no=01377200 |
| HACKENSACK RIVER AT WEST NYACK NY | Active | 01376800 | http://waterdata.usgs.gov/nwis/nwisman/?site_no=01376800 |
| SADDLE RIVER NEAR SPRING VALLEY NY | Inactive | 01390200 | http://waterdata.usgs.gov/nwis/nwisman/?site_no=01390200 |
| PINE BROOK NEAR SPRING VALLEY NY | Inactive | 01390300 | http://waterdata.usgs.gov/nwis/nwisman/?site_no=01390300 |
| NAURAUSHAUN BROOK AT NAURAUSHAUN NY | Inactive | 01376850 | http://waterdata.usgs.gov/nwis/nwisman/?site_no=01376850 |
| PASCACK BROOK AT PEARL RIVER NY | Inactive | 01377300 | http://waterdata.usgs.gov/nwis/nwisman/?site_no=01377300 |
| SADDLE RIVER AT UPPER SADDLE RIVER NJ | Active | 01390450 | http://waterdata.usgs.gov/nwis/nwisman/?site_no=01390450 |
| HACKENSACK RIVER AT NAURAUSHAUN NY | Inactive | 01376900 | http://waterdata.usgs.gov/nwis/nwisman/?site_no=01376900 |
| PASCACK BROOK AT PARK RIDGE NJ | Active | 01377370 | http://waterdata.usgs.gov/nwis/nwisman/?site_no=01377370 |
| SPARKILL CREEK AT SPARKILL NY | Inactive | 01376280 | http://waterdata.usgs.gov/nwis/nwisman/?site_no=01376280 |
| MINISCEONGO CREEK AT MOUTH AT HAVERSTRAW NY | Other | 01374485 | http://waterdata.usgs.gov/ny/nwis/inventory/?site_no=01374485 |