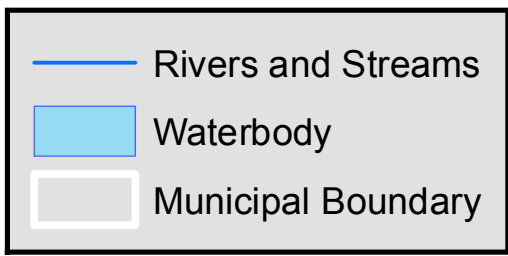


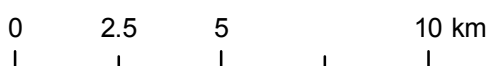
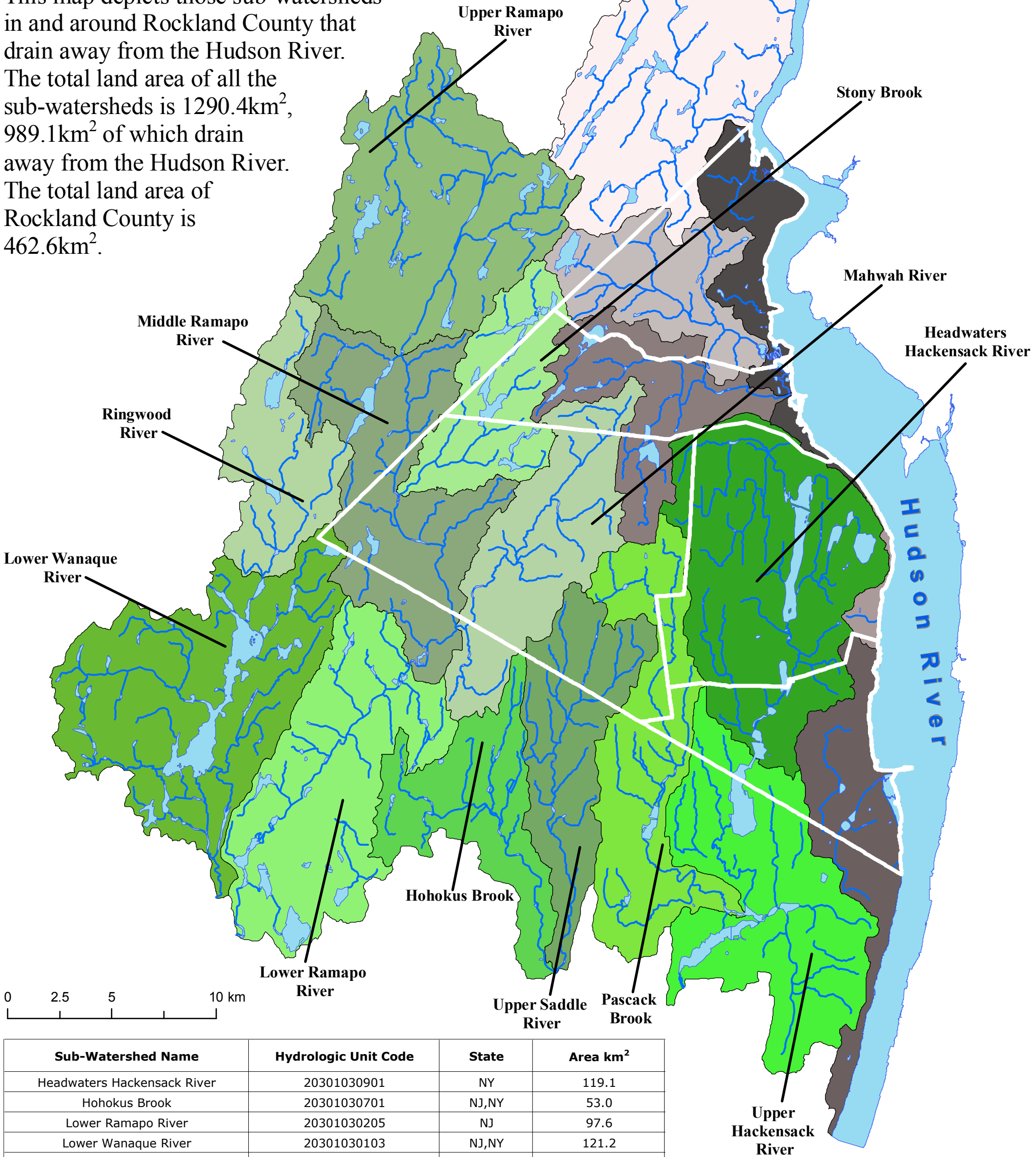
Rockland County Sub-Watersheds Draining away from Hudson



This map depicts those sub-watersheds in and around Rockland County that drain away from the Hudson River.

The total land area of all the sub-watersheds is 1290.4km², 989.1km² of which drain away from the Hudson River.

The total land area of Rockland County is 462.6km².



Sub-Watershed Name	Hydrologic Unit Code	State	Area km ²
Headwaters Hackensack River	20301030901	NY	119.1
Hohokus Brook	20301030701	NJ,NY	53.0
Lower Ramapo River	20301030205	NJ	97.6
Lower Wanaque River	20301030103	NJ,NY	121.2
Mahwah River	20301030203	NJ,NY	67.3
Middle Ramapo River	20301030204	NJ,NY	90.5
Pascack Brook	20301030902	NJ,NY	76.2
Ringwood River	20301030102	NJ,NY	46.7
Stony Brook	20301030202	NY	47.2
Upper Hackensack River	20301030903	NJ,NY	97.3
Upper Ramapo River	20301030201	NY	114.4
Upper Saddle River	20301030702	NJ,NY	58.6
Total	N/A	NJ,NY	989.1